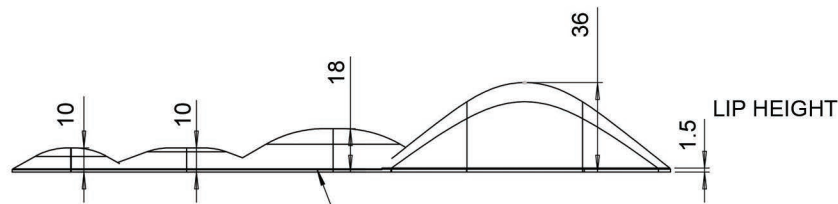


PlayMounds

Arc Stepper Left to Right

PLAYGROUND GRASS
by ForeverLawn®

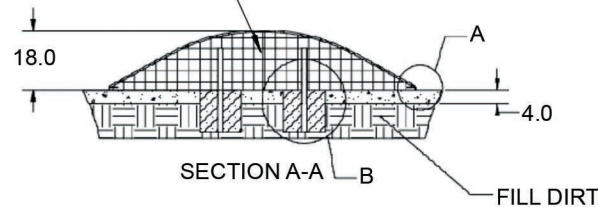


ALL MOUNDS HAVE THE SAME ANCHORING SET UP

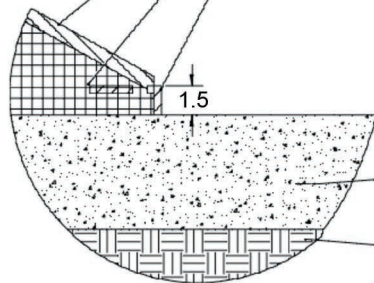


PlayMounds™ patent pending Layering System by ForeverLawn®

EPP PROTECTIVE FOAM LAYER
EPS GEO FOAM CORE
HDPE NAILER FOR SECURING FOREVERLAWN TURF



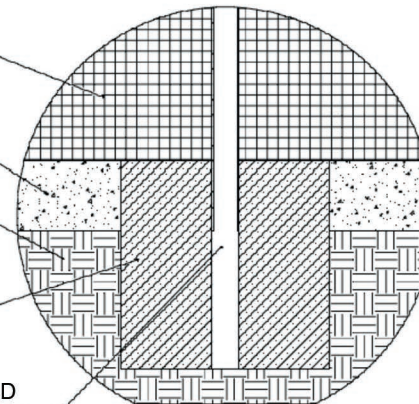
GROUND ANCHORING SYSTEM



DETAIL A
SCALE 1:3

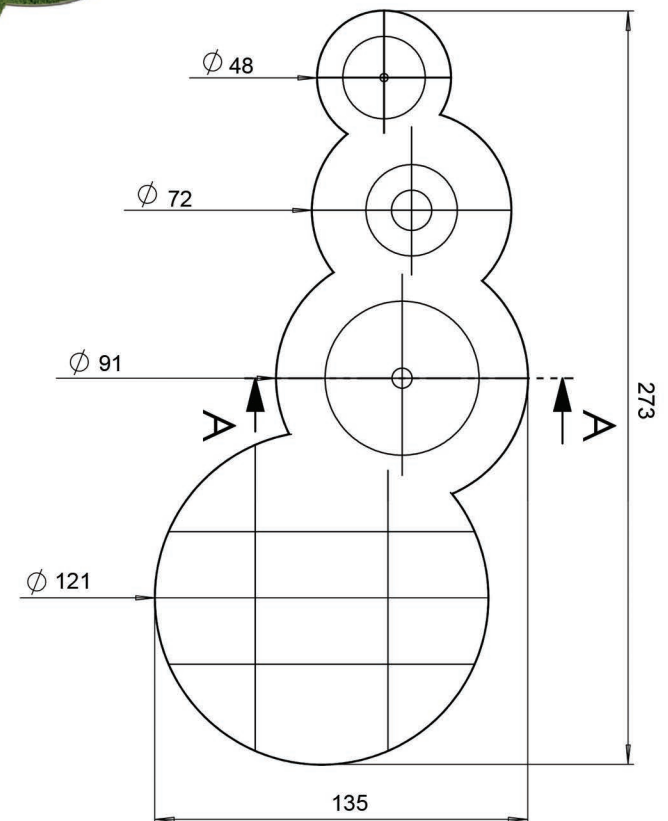
EPS GEO FOAM CORE
4" OF CRUSHED STONE
FILL DIRT

CONCRETE FOOTER



DETAIL B
SCALE 1:5

GALVANIZED STEEL POLE GLUED INTO GEO FOAM WITH URETHANE EXPANDABLE FOAM THEN SUNK INTO THE CONCRETE FOOTER



PLAYMOUND SECTIONS
MUST BE GLUED TOGETHER
USING GREAT STUFF PRO™

Units: Feet and inches

ForeverLawn

330.499.8873 • foreverlawn.com
8007 Beeson St., Louisville, OH 44641

CADdetails
MICROSITE

microsite.caddetails.com/1148

Material	Polystyrene	
Covering	Turf (sold separately)	
Weight		
Drawing No.	M1928	08/25